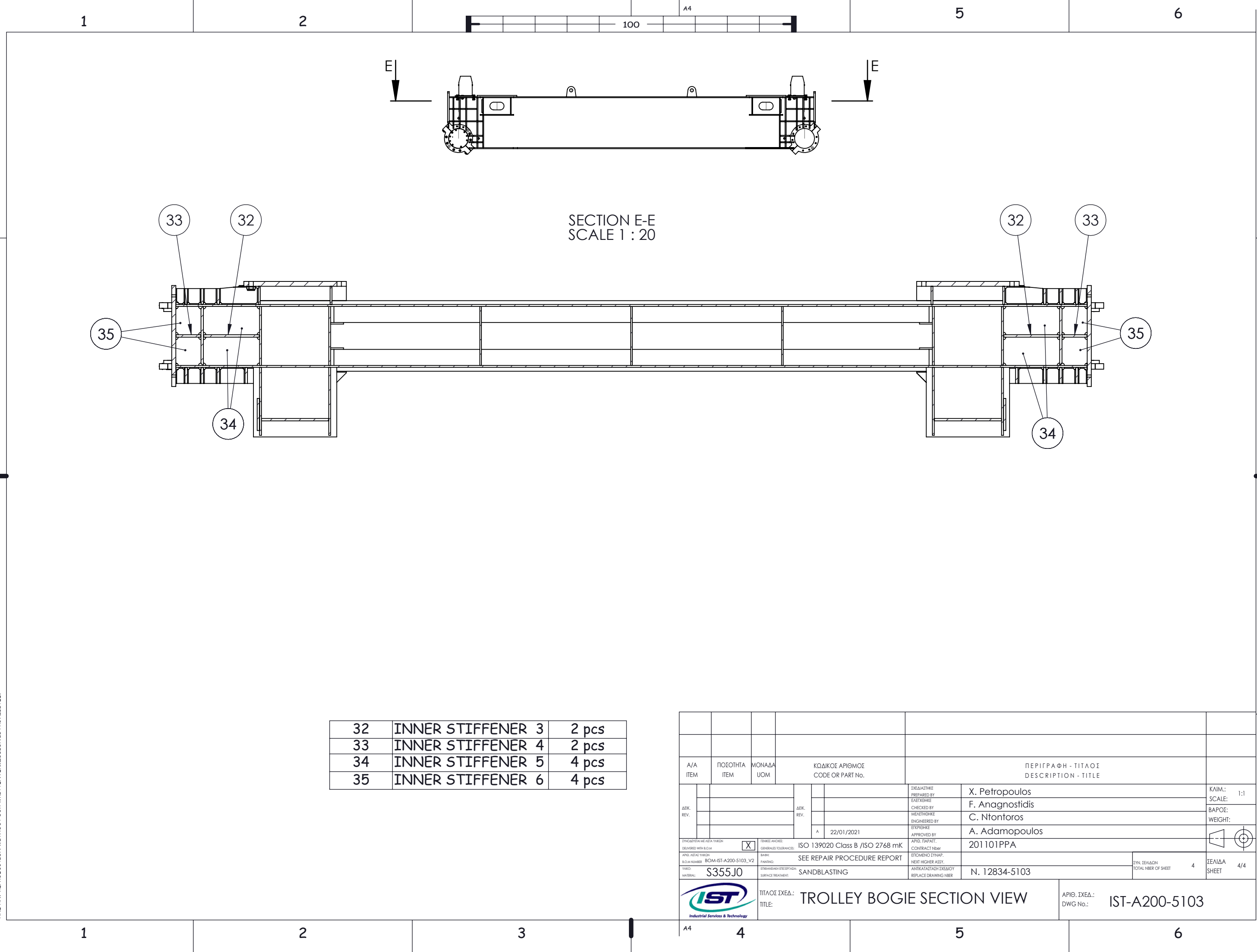


THIS DOCUMENT CONTAINS PROPRIETARY INFORMATION OF I.S.T S.A.
AND ANY REPRODUCTION WITHOUT OUR WRITTEN PERMISSION IS PROHIBITED.



| | | |
|----|-------------------|-------|
| 32 | INNER STIFFENER 3 | 2 pcs |
| 33 | INNER STIFFENER 4 | 2 pcs |
| 34 | INNER STIFFENER 5 | 4 pcs |
| 35 | INNER STIFFENER 6 | 4 pcs |

| | | | | | | | | | | | | | | | | | | | |
|--|--|------------------|--|--|--------------|--|------------------------------|---|-----------------|---------------|----------------|-------------------------------------|--|---|-----------------|--------------------------|--|---------------|--|
| | | | | | | | | | | | | | | | | | | | |
| A/A ITEM | | ΠΟΣΟΤΗΤΑ ITEM | | ΜΟΝΑΔΑ UOM | | ΚΩΔΙΚΟΣ ΑΡΙΘΜΟΣ CODE OR PART No. | | ΠΕΡΙΓΡΑΦΗ - ΤΙΤΛΟΣ DESCRIPTION - TITLE | | | | | | | | | | | |
| ΔΕΚ. REV. | | | | | ΔΕΚ. REV. | | ΣΧΕΔΙΑΣΤΗΚΕ PREPARED BY | | X. Petropoulos | | ΚΑΙΜ.: 1:1 | | | | | | | | |
| | | | | | | | ΕΛΕΓΧΘΗΚΕ CHECKED BY | | F. Anagnostidis | | ΣΚΑΛΗ: BAPOΣ: | | | | | | | | |
| | | | | | | | ΜΕΛΕΤΗΣΘΗΚΕ ENGINEERED BY | | C. Ntontoros | | ΒΑΡΟΣ: WEIGHT: | | | | | | | | |
| | | | | | | | ΕΓΚΡΙΘΗΚΕ APPROVED BY | | A. Adamopoulos | | | | | | | | | | |
| | | | | | A | 22/01/2021 | ΑΡΙΘ. ΠΑΡΑΤ. CONTRACT Nbr | | 201101PPA | | | | | | | | | | |
| ΕΓΧΩΡΙΣΤΕΙ ΜΕ ΑΛΙΑ ΤΥΧΟΝ DELIVERED WITH B.O.M | | | | <input checked="" type="checkbox"/> | | ΓΕΝΕΡΑΙΕΣ ΑΝΟΧΕΣ: GENERAL TOLERANCES: | | ISO 139020 Class B /ISO 2768 mK | | | | | | | | | | | |
| ΑΡΙΘ. ΛΟΓΙΑΣ ΤΥΧΟΝ B.O.M NUMBER | | | | BOM-IST-A200-5103_V2 | | ΒΑΡΗ: PAINTING: | | SEE REPAIR PROCEDURE REPORT | | | | | | | | | | | |
| ΤΥΠΟΣ: MATERIAL: | | S355J0 | | ΕΠΕΡΧΑΝΘΗΚΕ ΕΠΕΡΧΑΝΘΗΚΕ: SURFACE TREATMENT: | | SANDBLASTING | | ΑΝΤΙΚΑΤΑΣΤΑΣΗ ΣΧΕΔΙΟΥ REPLACE DRAWING NBER | | N. 12834-5103 | | ΕΥΝ. ΣΕΛΙΔΩΝ TOTAL NBER OF SHEET | | 4 | ΣΕΛΙΔΑ SHEET | 4/4 | | | |
| | | | | | | | | ΤΙΤΛΟΣ ΣΧΕΔ.: TITLE: | | | | TROLLEY BOGIE SECTION VIEW | | | | ΑΡΙΘ. ΣΧΕΔ.: DWG No.: | | IST-A200-5103 | |